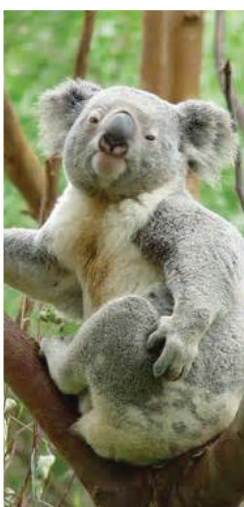




Scout Campsites Queensland



A comprehensive listing of Scout Campsite facilities and activities in Queensland

The Scout Association of Australia, Queensland Branch Inc.



Scout Campsites

Scouts Queensland offers a number of great campsites for Scouts, Scout families and the public. The Campsites can cater for large or small numbers with a range of activities.

For enquiries on these scout campsites please head to the 'about us' section of www.scoutsqld.com.au



REDCLIFFE / PINE RIVERS

9

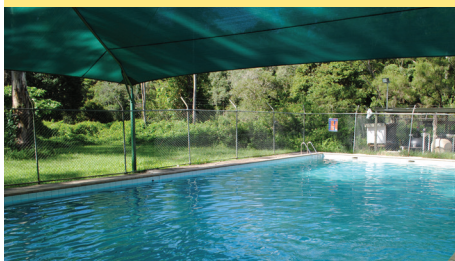
Baden Powell Park Scout Campsite Samford

68 Cash Ave, Samford

Facilities accommodation in/outdoors, abseiling tower, solar heated pool, obstacle course, bush camping, dam, activities shed, Heritage Centre, canoeing

Activities swimming, orienteering courses, water activities on dam (canoes available for hire). The 15 m abseiling tower and obstacle course are available under strict conditions.

Website <http://www.scoutsqld.com.au/index.cfm?MenuID=122>



7

Murrenbong Scout Campsite Kurwongbah

135 Scout Rd, Kurwongbah

Facilities accommodation in/outdoors, dam, canoeing, bush camping, large activity areas, two entrance gates.

Activities water activities, bush craft, pioneering, environmental activities, bush camping, campfires, orienteering, canoeing, water activities

Website <http://www.murrenbong.org.au/>



IPSWICH

11

Tyamolum Scout Campsite Mount Crosby

Bunya St off Mount Crosby Rd, Mount Crosby

Facilities pack shelter, bush camping, nearby creek, modern amenities

Activities small swimming hole, campfire circle, outdoor Chapel

Website <http://www.scoutsqld.com.au/index.cfm?MenuID=354>



13

Allawah Scout Campsite Chuwar

61 Allawah Rd , Chuwar

Facilities pack shelter, camping sites, bush chapel, undercover eating area.

Activities boat ramp, water activities

Website <http://moreton.scoutsqld.com.au/Pages/Campsites%20Page.htm>



South East Queensland



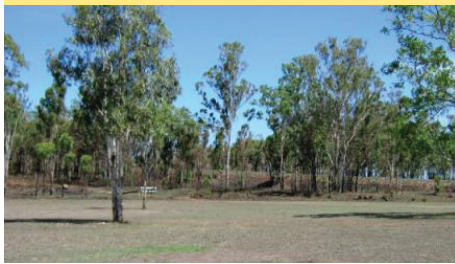
SUNSHINE COAST

3

Rocky Creek Scout Campsite Landsborough

3246 Old Gympie Rd, Landsborough

- Facilities** multiple pack shelters, bush camping, indoor activity area, modern amenities, small dam
- Activities** low ropes course, abseiling, camping
- Website** http://www.beavermasters.scoutsqld.com.au/Camp_Site_information.htm



LOGAN

14

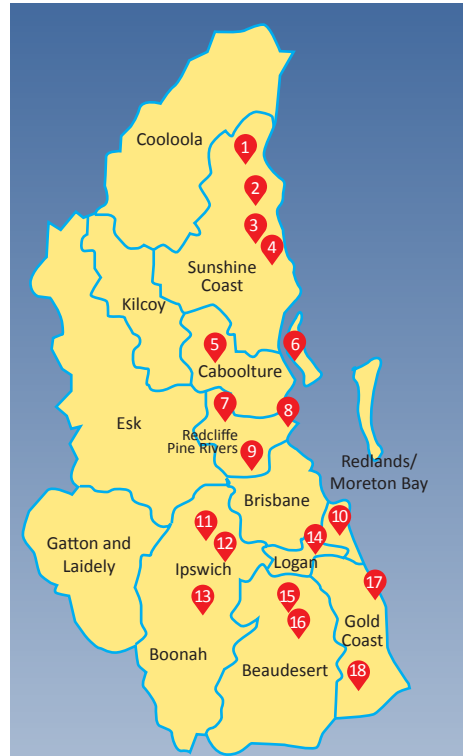
Karingal Scout Campsite Mount Cotton

1 Karingal Rd, Mount Cotton

- Facilities** accommodation in/outdoors, mountain bike tracks, obstacle course, bush camping, dam and canoeing
- Activities** orienteering, hiking / bushwalking, canoeing, water activities and camping
- Website** <http://www.scoutsqld.com.au/index.cfm?MenuID=355>



SOUTH EAST QLD REGIONS



Sunshine Coast

- Noosa – Badgers Wood
- Dunethin Rock
- Rocky Creek
- Camp Cooroora

Caboolture

- Lagoon Creek
- Bribie Island

Redcliffe/ Pine Rivers

- Murrenbong
- Brownsea
- Baden-Powell Park

Redlands/ Moreton Bay

- Eprapah

Ipswich

- Tyamolum
- Atkinson Dam
- Allawah

Logan

- Karingal

Beaudesert

- Guanaba Creek
- Gum Flat

Gold Coast

- Kallaroo
- Numinbah Lake

REDLANDS

10

Eprapah Scout Campsite Victoria Point

Cnr Cleveland –Redland Bay Rd & Colburn Ave, Victoria Point

- Facilities** bunk house, Scenes Environment Centre, commercial kitchen, camping, environmental walking trails, Eprapah Creek, environment courses available
- Activities** The park surrounds Eprapah Creek and covers 39 hectares of environmentally protected habitat that is home to many species of fauna and flora.
- Website** <http://victoriapoint.scoutsqld.com.au/Eprapah/Eprapah.htmlindex.cfm?MenuID=122>



REDCLIFFE / PINE RIVERS

8

Brownsea Water Activities Centre Shorncliffe

Allpass Parade, Shorncliffe, a short walk from the railway station.

- Facilities** Pack Holiday shelter for 32 boys/girls and 8 leaders (3 rooms). Messing cooking and ablution block in same building complex. Town water, 240v power.
- Activities** Cabbage Tree and Nundah Creeks for water activities. Canoes, kayaks and sailing crafts by Boondall wetlands nearby.
- Website** brownsea.scoutsqld.com.au/



Scout Campsites in Queensland

19 Aldershot Activity and Campsite, Maryborough

- Location** On western side of Bruce Highway, 10 km north of Maryborough.
- Facilities** Pack Holiday Shelter, double deck bunks and mattresses for 48. Full kitchen facilities, gas stove, electric stove and BBQ, freezer and refrigerator, cooking utensils. Eating utensils available. Septic, hot/cold showers, 240v power, tank water.
- Activities** 172 acres for bush camping and/or Pack Holidays. Outdoor Chapel, large parade ground, campfire circle (depending on fire restrictions). Natural bushland for hiking, nature study and orienteering. Small dam for canoeing. Wongi State Forest (including Lenthal Dam) adjacent to camp. Caretaker on site. Obstacle Course and Abseiling Tower will be made available during 2014 please contact the camp to check availability.

12 Atkinson District Scout Campsite, Mt Tarampa

- Location** 336 Watson Road, Mt Tarampa Qld 4311 – 15 km south west of Wivenhoe Dam. 8 hectares (20 acres) of secluded lightly wooded grounds.
- Facilities** Large enclosed den for meetings/training/sleeping; kitchen with electric stove and industrial refrigerator, gas barbeque; preparation & dining area with seating for 40; ablution block with female and male showers and toilets; parade ground with flag pole; designated campfire area; open air chapel with natural log seating; choice of grassed or bush camp sites; 6 canoes for hire, with trailer (for use on dam); obstacle course
- Activities** water activities in Atkinson Dam; nature bush walks around dam; fishing in dam; easy access to dam for boats.

20 Barrabadeen Scout Campsite, Atherton Tablelands

- Location** 10 km from Atherton.
- Facilities** Pack Holiday shelter caters for 30 boys/girls, 12 leaders. Messing and cooking in same building. Hot/cold showers, septic toilets. Wood combustion stove and gas range, electric refrigerator and freezer. Camping facilities for 100 campers. Two toilet blocks, each 6 toilets, hot/cold showers. Own electric plant, town water. Limited firewood, above ground fires only.
- Activities** Location on shore of Tinaroo Dam. Water activities, abseiling. Campsite provides 90 acres open forest. Danbulla State Forest adjacent. Canoes for hire.

6 Bribe Island Scout Campsite, Bribe Island

- Location** 94 Webster Street, Bongaree, Bribe Island.
- Facilities** Pack holiday shelter with mattresses on floor. Sleeps approx. 40 people. 2 showers + 1 toilet upstairs and 2 showers + 2 toilets downstairs. Commercial kitchen equipped with large fridge, gas stove, microwave, toaster and urn. BBQ available and wash up area. Basic utensils, bring plates. Only available to scouting groups / families, community groups and school groups. Camp sites available too.
- Activities** Canoeing, swimming, hiking plus heaps more!

4 Camp Cooroora Scout Campsite, Cooroy

- Location** Turn into Sivyers Rd at Six Mile Creek on the Tewartin/Cooroy Road follow blue signs on sealed road then 1 km on unsealed road to end of trees then turn sharp left. 10 kms from Cooroy Post Office.
- Facilities** Dormitory style accommodation; toilets and showers; well equipped kitchen; Large gas stove with electric oven, and large BBQ plate. Limited crockery and cooking utensils; dining area seats up to 50 people; rotunda with BBQ and picnic facilities; bush chapel; designated Campfire area.
- Activities** Water activities, no swimming in the lake, Hiking and Fishing: Fishing permits are sold by Caretakers.

21 Craignish Scout Campsite, Hervey Bay

- Location** The Craignish campsite is located on the foreshore of Craignish at the end of Pacific Promenade. On Burrum Heads/Toogoom Road, 10 km from Hervey Bay.
- Facilities** Pack Holiday Shelter. Dining shelter, kitchen facilities with freezer and refrigerator. BBQ and limited cooking facilities. No eating gear. Septic, hot/cold showers, 240v power, town water.
- Activities** Camping and/or Pack Holidays, seafront camping.



Barrabadeen Scout Campsite, Atherton Tablelands

22 Cumorah Scout Campsite, Murphy's Creek

- Location** Bush camp site on 12Ha next to a creek, below the edge of the Great Dividing Range (east), near Murphy's Creek, about half an hour drive from Toowoomba.
- Facilities** Toilets and showers available and some shelters used for drinking water collection. There is a flagpole, campfire circle and bush chapel. Telephone (land line) and power is not available.

2 Dunethin Rock Scout Campsite and Water Activity Centre, Maroochy River

- Location** 4 Lake Dunethin Road, Maroochy River (7km East of Yandina). 4 Hectares which includes camping and activity areas as well as natural bushland. Short walk to Maroochy River and Lake Dunethin.
- Facilities** Well maintained camping areas to suit groups 80-110. Gas hot showers, septic toilets, UV filtered tank water. Multi-purpose building has large kitchen with two 5 burner gas stoves/large ovens, microwaves, walk-in coldroom, freezer and large dining area. Cooking utensils, crockery, cutlery. Tables and chairs for 60-70. Whiteboard and blackboard. Demountable building has two Meeting Rooms. Covered activity area. Two BBQ's (BYO gas bottle). Campfire area (wood available) and outdoor Chapel. Dedicated car parking area.
- Activities** Camping. Canoeing/kayaking (canoes available by arrangement), Rafting (equipment available – BYO ropes), fishing, swimming. Bush walk takes 15 minutes with spotlight activity and short diversion to Dunethin Rock which is suitable for Scouts Own. Heritage Pathway has 15 mosaics celebrating 100 years of Scouting history. Gentle slope suitable for waterslide if sufficient water available.

23 Florence Bay Scout Campsite, Magnetic Island

- Location** Magnetic Island is off Townsville and is accessible by Barge, Ferry and Bus service or own vehicle.
- Facilities** One large (20x10 metre) black building with gas burners and 12 volt lighting. The building is used mainly for cooking etc. and tents are the main accommodation. Toilet facilities are in the nearby National Park. No showers are available on site. Drinking water is available only from pump on site tank.
- Activities** Swimming, Hiking, Nature Study and Fishing.



For enquiries on these scout campsites please head to the 'about us' section of www.scoutsqld.com.au

15 Guanaba Creek Scout Campsite, Guanaba [Scouting Use Only]

- Location** Guanaba Creek Road, Guanaba. Approximately 17 km from Nerang or 14 km from Oxenford Pass. Set in eight acres of bushland alongside creek.
- Facilities** M & F toilets & showers. (Hot Showers BYO Gas Bottle 9kg POL fitting) Bush chapel. Shelter caters for up to 60 with large kitchen (electric oven, two fridges, one ice maker / cold water in door, drinking urn & microwave.) Mattresses (30) available to lay on floor. Wood Barbeques (6) with cooking plates. Some firewood on site (but BYO appreciated). Campfire circle. Flagpole and electricity. No kitchen utensils available. Tent camping for up to 150.

16 Gum Flat Scout Campsite, Canungra

- Location** Canungra Scout Den, 3086 Beechmont Road, Witheren—approx. half an hours drive from the Gold Coast
- Facilities** 8 acres of mowed flat land for camping surrounded on two sides by the Coomera River. Kitchen - complete with fridge, freezer, stove, oven, and plenty of bench space. Campfires allowed. Toilets and limited hot showers. Large den with undercover area.
- Activities** Swimming holes in the Coomera River, short drive to O'Reilly's and Binna Burra for bushwalks.

17 Camp Kallaroo Scout Campsite, Burleigh Heads

- Location** 32 Stephens Street, Burleigh Heads. 6 minute walk to patrolled surf beach, 5 minute walk to shopping centres and restaurants and close to all of the attractions of the Gold Coast.
- Facilities** Air conditioned bunk house with 6 rooms for 44 people - Double bunks with mattresses supplied. Commercial kitchen facilities supplied with gas stove, fridge, microwave, cooking utensils, cutlery and crockery. Male & Female ablutions with hot & cold showers. Spacious grounds & outdoor bbq areas with seating for approximately 48 people. Tent & caravan sites are available.
- Activities** Canoeing, sailing on Burleigh Lake. (Own equipment required). Graded bush walks in National Park. Fishing and swimming in Tallebudgera Creek. Tennis courts and ten pin bowling within walking distance.

24 Camp Mangalore, Charleville

- Location** Approximately 42km south of Charleville on the Cunnamulla Rd and is on the bank of the Warrego River. Even though the river is not running there is a body of very deep water about a km long ideal for canoeing and swimming.
- Facilities** There is power for lighting in the buildings but all hot water is supplied by outdoor donkey systems operated by fire - very efficient Building has a screened eating area, large wood stove, and 4/5 rooms each with 3 or 4 hospital beds. Ladies separate toilets and shower area. Separate accommodation also available. All water is pumped out of the river so drinking water must be taken with you.
- Activities** There is an area for a camp fire and some interesting walks taking in old vehicle wrecks, some old wood stoves, a vehicle repair ramp and a couple of graves. The river has it's own beach which is an easy and very pretty walk from the campsite.

25 Keewol Park Scout Campsite, Emerald, Emerald

- Location** 85 Fairbairn Dam Road Emerald. Fairbairn Dam, approximately 25 km from Emerald. Lake-side site, handy for trips to Gem fields (sapphires), Gregory and Oakey Creek coal mines, Emerald irrigation farms and Cotton Gin.
- Facilities** Tent campsites, some tent poles available. One building (6 x 6m), concrete floor, 20 bunks. Male/Female toilets (septic) cold showers. Catering is responsibility of user. Kitchen/dining area (6 x 6 m building) - 4 burner cooker, sink, tables/stools for 36. No cooking utensils. Electricity to all buildings.
- Activities** Swimming, Canoeing, Sailing on lake. Canoes are available by arrangement. Natural bushland for hiking, nature study and orienteering.

26 Lake Awoonga Scout Campsite, Gladstone

- Location** Awoonga Dam Road Gladstone. End of Awoonga Dam Road, off Benaraby Road. Approximately 28 km from Gladstone.
- Facilities** Showers and toilets. Multi purpose building - kitchen, dining, training areas. Leaders' Room - 4 bunks, vinyl covered mattresses. Other Room - 20 bunks, vinyl covered mattresses.
- Activities** Bush campsite, adjacent Lake Awoonga. Non-polluting water activities on lake - fishing, sailing, canoeing, swimming. Large area for bush activities. Campsite has no electricity but a generator supplies lighting at night.

5 Lagoon Creek Scout Campsite, Caboolture

- Location** Bruce Highway Caboolture. 43 km north of Brisbane
- Facilities** Shelter available. Cooking and utensils in adjacent building, gas cooking and ovens, refrigerator, 240v power, gas hot water. This building can also be used for craft activities, lectures etc. if wet weather occurs. Fire-wood is supplied. Toilets brick and concrete male/female shower and toilet facilities with hand basins, mirrors, 240v power, gas hot water, well lit at night. Disabled shower and toilet facilities.
- Activities** Mohawk walk, good starting point for hikes.

27 Mafeking Scout Campsite, Childers

- Location** 5676 Isis Highway, Childers. 4 km from Childers on Biggenden Road
- Facilities** Double Garage, Dining Shelter, Wood Stove, Tank Water, Earth toilets
- Activities** Camping, Orienteering, Bushcraft skills

1 Noosa Badgers Wood Campground, Noosaville

- Location** 11 Eumundi Noosaville Rd. Situated on 1.6 Hectares of natural parkland. Five minutes walk to the Noosa River. Handy to beaches, national parks and shopping centres.
- Facilities** 36 bed bunkhouse, kitchen & dining room, commercial stove & refrigerator, BBQ. Open area dens: mattresses, jug, toaster, microwave, refrigerator and BBQ. Pleasant camping in park like grounds. Camp kitchen with gas BBQ. Camping for up to 250 people.
- Activities** Clean fresh amenities, campfire circle, 'Scouts Own' garden, fully fenced and secure with onsite camp manager. Canoe, sail, fish, swim the Noosa River, and hike the Great Sandy National Park, Noosa and Mt Coolum National parks or abseil Mt Tinbeerwah. All handy to the campground. Scouting families welcomed.

18 Numinbah Scout Campsite, Numinbah Valley

- Location** Numinbah Lakes Bush Campsite is situated on the Hinze Dam in beautiful Numinbah Valley, not far from Nerang.
- Facilities** Toilets (environmentally configured) & some tank water. There is a shelter for use by Scouts which can be used for kitchen, adult sleeping or both. No fire pits or bush toilets please. Campfire near shelter, please BYO wood.

Scout Campsites in Queensland

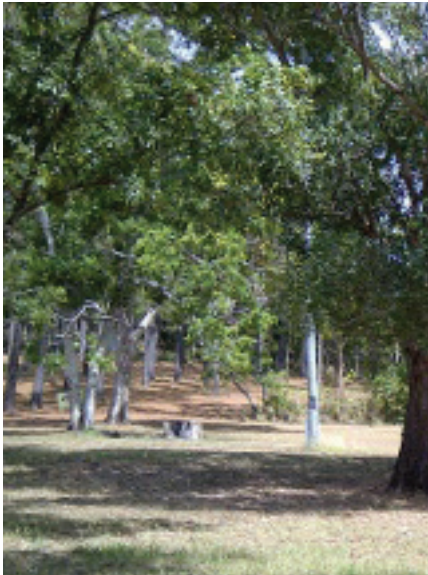
Numinbah Scout Campsite cont ...

We do recommend that you bring your own drinking water. The supply of tank water depends on Mother Nature.

Activities Numinbah Lakes is also the headquarters for Gold Coast Adventurous Activities Water Activities and Archery Range. There are also abseiling facilities close by at Tamborine and the Gold Coast (transport for attendees is required).

34 Nyleta Scout Campsite, Silkwood

Location 4 Branch Road Silkwood



Rowallan Park, Mackay

28 Rowallan Park Scout Campsite, Mackay

Location 282 Glendaragh Road, Mackay QLD 4740. 12 km North of Mackay

Facilities Bunks for 30 people (15 people under 9). 2 separate rooms with disability access. Ablution block with female and male showers and toilets and disability access. Kitchen - complete with fridges, freezer, industrial gas stove, urns, cooking utensils and crockery. Dining area (seats max 30 people). Training room (seats 20). Activities Building (seats 60 and has full kitchen facilities, fridge, microwave oven). Parade ground with flag poles. Designated campfire area. Open air chapel.

Activities Bush walks, Swimming, Small dam for water activities, guided tour and historical sites (by arrangement)

29 Seeonee Scout Campsite, Rockhampton

Location 399 Yeppoon Road, Parkhurst (North Rockhampton) - approx. 15 kilometres from the centre of Rockhampton

Facilities Bunkhouse for 45 (21 bunks and 3 single beds). Ablution block with F & M showers and toilets. Kitchen - with fridges, freezer, industrial gas stove, urns, cooking utensils & crockery. Dining area (seats 40). Training room (seats 20). Air con & computers (internet unavailable). Parade ground with flag poles. Designated campfire area. Open air chapel. Large camping grounds.

Activities Natural camping bushlands located ten minutes from major shopping areas and twenty minutes from Capricorn Coast beaches.

30 Tamaroo Scout Campsite, Bluewater

Location Bluewater Station Road, Bluewater, 20 mins drive north on Bruce Highway from Townsville.

Facilities Tent campsites and powered sites for a limited number of caravans. Four separate sleeping areas in two buildings. There are 40 bunks overall and more accommodation can be arranged in the adjacent Bluewater Group den. Male/female toilets (septic) hot and cold showers with disability facility. Catering is the responsibility of the user. Kitchen/dining area (6 x 6m building) – 2 stoves, large commercial fridge, sink, tables/stools for 36. Some cooking utensils, crockery and cutlery. Electricity to all buildings.

Activities Swimming and sailing on lake. Natural bushland for hiking, nature study and orienteering.



Wirraglen Scout Campsite, Kleinton

31 Wirraglen Scout Campsite, Kleinton

Location Wirraglen Road, Cabarlah —14 kms north of Toowoomba just off the New England Highway, near Highfields.

Facilities The "Training Ground" can be used for Leader training & Cub and Joey Scouts. It has a kitchen with commercial gas stove, 5 bunk rooms accommodating 36 people, toilets, showers, activity rooms, chapel site and a camp-fire circle. Scout Ridge is used for camping and has toilets, showers & a washing up area. A bunk room accommodating 4 people and refrigerator is also available.

Activities There is a public swimming pool within 15 minutes walk, as well as the local Highfields Pioneer Village Museum.

32 Wyper Park Scout Campsite, Bundaberg

Location 1460 Isis Highway, South Bingera — 14 km south of Bundaberg

Facilities Two dormitories with bunks (one for 24 and one for 20). 2 ablution blocks with toilet and hot water shower facilities for both males and females. Kitchen with fridges freezer, cool room, 2 gas stoves, urn, cooking utensil and crockery. Dining area (seats 80-90 people). Parade ground with flagpole. Designated campfire area. Open air Chapel. Campsites.

Activities Camping, abseiling, hiking and bush walks, orienteering, water activities on the Burnett River (at the bottom of the campsite)

33 Tibooburra Lodge Scout Campsite, Stanthorpe

Location Darcy Street, Stanthorpe- 2 minutes drive or a 10 minute walk from the town centre.

Facilities The den can sleep 60 people comfortably and we have a sizable oval suitable for camping.

Activities Bush walking, rock climbing, abseiling, caving, canoeing, swimming, sailing, water Skiing, wine tasting and tours, 4 National Parks with 3/4 hour drive, fishing, cray-fishing, geology, horse-riding, bird watching, sheep sheering. Visit the museum, orchards, vineyards or a working farm.



Baden Powell Park
Scout Campsite, Samford



Scout Campsites in Queensland



Scouts Queensland offers a number of great campsites for Scouts, Scout families and the public. The Campsites can cater for large or small numbers with a range of activities.

For enquiries on these scout campsites please head to the 'about us' section of www.scoutsqld.com.au

The Scout Association of Australia, Queensland Branch Inc.

PO Box 520 Toowong QLD 4066

Telephone: 1800 SCOUTS or 07 3870 7000

Fax: (07) 3870 4960

www.scoutsqld.com.au

