



Scouts
QUEENSLAND

***QUEENSLAND BRANCH
ADULT LEADER
AND
YOUTH LEADERSHIP***

TRAINING CALENDAR

For courses being held between 19/9/23 and 31/12/23



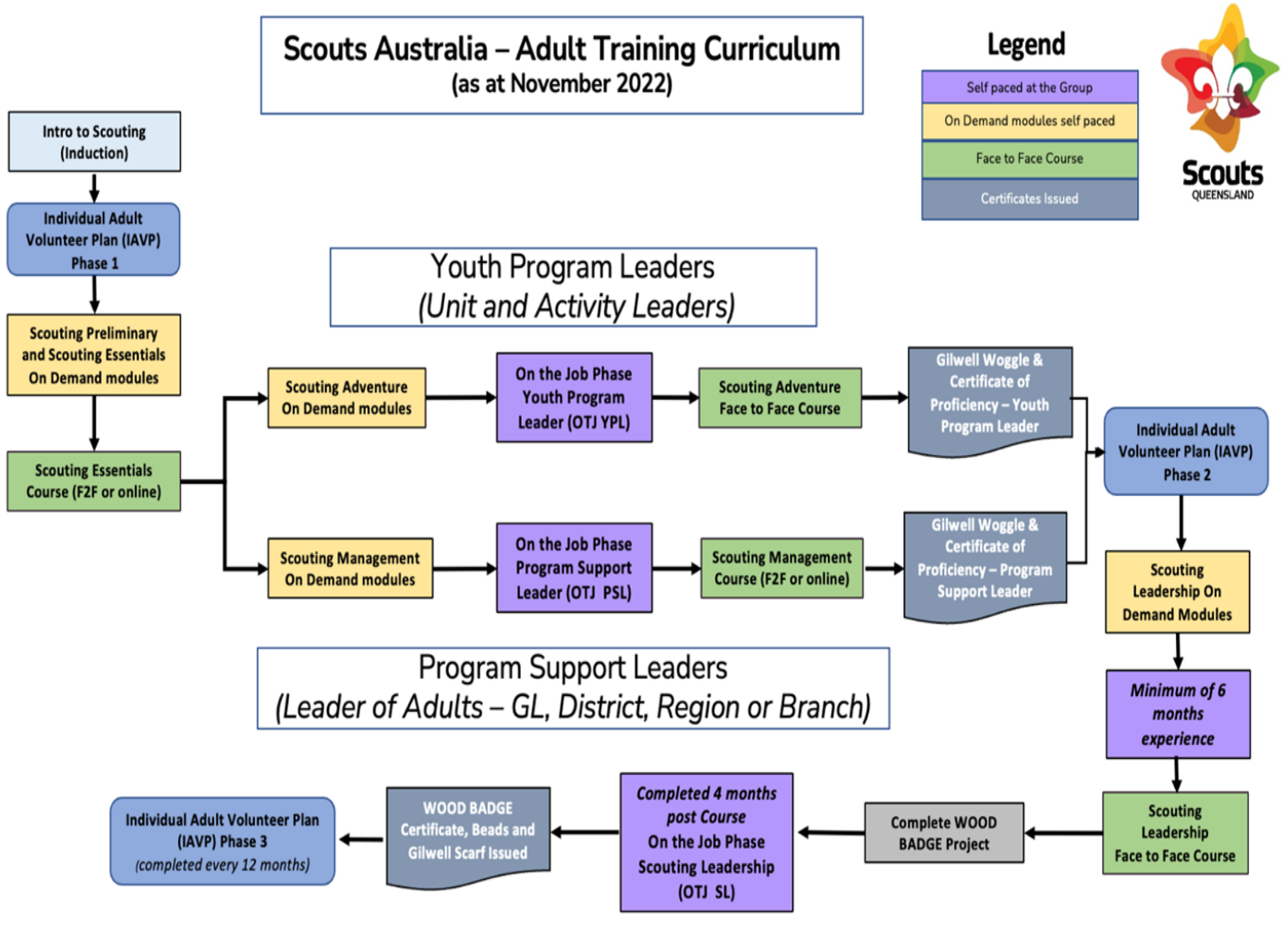
Issue number: Version 9 - September 2023

Date Printed: 19/9/23

OVERVIEW

At your initial induction interview and on completion of your Individual Adult Volunteer Plan Phase 1, with your Team Leader, you should have discussed, in detail, topics such as the Movement as a whole, the Regions, Districts, Groups, Sections, other activities available through Scouting and the possible role you may undertake. Through your attendance at formal training courses and On Demand learning, you will gain an understanding of the Mission and Purpose of the Association and the commitment the Movement requires of you. You should have started thinking about and possibly discussed, with others, your attitude to the Promise and Law and the Spiritual policy of the Association.

ADULT LEADER TRAINING PATHWAY



ACCREDITED TRAINING (VIA SCOUTS AUSTRALIA INSTITUTE OF TRAINING RTO: 5443)

Through SAIT, Scouts Australia offers members the opportunity to earn nationally recognised qualifications from Certificate II up to Diploma level via an RPL process. Qualifications can be earned in Business, Leadership and Management and Outdoor Recreation. Please email bc.vet@scoutsqld.com.au for more information.

RPL

If you wish to be considered for Recognition of Current Competencies (RCC) or Recognition of Prior Learning (RPL) for Woodbadge Training Courses or Adventurous Activity Programs available in this calendar please email aa.pathways@scoutsqld.com.au for details on the process.

APPLICATIONS

To register to attend a training course/program you are required to complete the current version of the A15 Training application Form and have it approved as indicated on the form. Please ensure you have completed any pre-requisites required before submitting your training application. The A15 is available on line at docs.scoutsqld.com.au. The course/program fees can be found on <https://scoutsqld.com.au/training/training>. Completed Applications need to be sent to a15@scoutsqld.com.au Each application should be sent in a separate email and the subject line should contain the course / program number & title and the applicant's name.

Payment for course will be invoice. Please note that only formations can be invoiced and payment will be required immediately and no later than 14 days prior to the course to ensure acceptance on the course. Non payment of the invoice means that the application will not be accepted.

NB: ALL COURSES / PROGRAMS CLOSE 4 WEEKS PRIOR TO THE COURSE / PROGRAM

ON THE JOB PHASES

On The Job (OTJ) Phases are essential to becoming an effective Adult Leader in Scouting. This part of the training journey is completed in your usual Scouting environment.

On the Job Phases are made up of I Statements separated into categories which are critical to your development as a Leader. Additional information relating to each I Statement can be found online or you can seek assistance from your Team Leader. Completion and submission of OTJ Phases is online in the On Demand Learning platform. Approval is done by either your Team Leader or Next Level up Team Leader. If you need to change your Team Leader for any reason, follow the prompts on the website. Once each OTJ Phase has been verified, your SMS record is updated to reflect completion.

You can find out more about each Phase by clicking on the following link: https://training.scouts.com.au/phase_checklist

COURSE/PROGRAM CANCELLATION FEES AND ASSOCIATED PROCESSES

- If notice is received 7 days prior to the course/program - no fee is payable and fees will be credited directly to the Formation account.
- If notice is received less than 7 days prior to the course/program - catering and administration fees are payable with the balance being credited directly to the Formation account.
- No notice (i.e. trainee does not attend course/program) - full fee is payable - no refund
- If courses are cancelled by Deputy Chief Commissioner AIS or Branch Commissioner Training & Development - no fee is payable.

ADVENTUROUS ACTIVITY PROGRAMS

As an Adult Leaders & Adult Members (not Youth Program Supporters) you are able to attend Safe Participant (SP) Adventurous Activities training programs (eg Canoe, Abseiling, Bushwalking, Pioneering etc) once your membership application is approved. Adult Members are not eligible to attend Trained Participant (TP) Programs listed in this calendar and Adult Leaders must hold a Certificate of Proficiency (CoP) prior to applying.

Venturer Scouts and Rovers who wish to increase their skills or proficiency in Adventurous Activities can attend these programs.

SUPPLEMENTARY COURSES

There are a number of courses available to supplement the formal training program. These include: Child Safe Scouting Officer, Diversity and Inclusion, Personal Leader Advisers, Youth Mental Health First Aid and Committee Development.

GRANT FUNDED TRAINING FEES

Training fees funded by Grant funds can only be used if the applicant attends the course/program. To facilitate this the Group will need to pay for the course/program and once the applicant has attend the course/program the group can then seek reimbursement from the Grant. Please note that the original application must be submitted within the grant period (after the Grant has been awarded and before the acquittal date) to be eligible for reimbursement from the grant.

Training Locations

Aldershot Campsite: Bruce Highway, Maryborough

Baden Powell (BP) Park: 68 Cash Avenue, Samford

Barrabadeen Campsite: Tinaroo Dam, Atherton Tablelands

Brownsea: Allpass Parade Shorncliffe

Darling Downs Headquarters: 2 Victory Street, Toowoomba

Far North Region Headquarters: Irene Street, Mooroolooloolo, Cairns

Karingal Campsite: Karingal Road, Mt Cotton

Keewol Park: Fairbairn Dam, approx 25 km from Emerald, 260 km from Rockhampton

Moreton Region Scout Centre: Cameron Park Easton Street Booval

Queensland Scout Centre: 32 Dixon St, Auchenflower

Rocky Creek Campsite: Old Gympie Rd, Landsborough

Rowallan Park: Bruce Highway, Mackay

Seeonee Park: Yeppoon Road, Rockhampton

Tarmaroo Campsite: Bluewater, Townsville

Wirraglen Campsite: Wirraglen Road, Kleinton, Darling Downs

Wyper Park: 1458 Isis Highway (or 1458 Childers Road) South Bingera

Adult Training

Scouting Essentials Course

Scouting Essentials is compulsory for all leaders and will provide your “survival skills” to support the personal progression of our young people in our units across the state. At this course you will learn about the Achievement Pathways, your role as an Adult Leader or Rover Scout in a youth-led program operating under the patrol system and how to empower youth members to reach their potential. Pre-requisites for this course include completion of all Scouting Preliminary and Scouting Essentials On Demand learning modules and completion of your Individual Adult Volunteer Plan – Phase 1. Apply for this course using the current version of the A15 form. In 2023 there will be three different offerings to attend this course. Option 1 will be a face-to-face full residential weekend. Option 2 will be offered online over a period of four weekday evenings commencing at 6.30pm for approximately 3 hours. Option 3 will be offered face to face over four weekday evenings hosted at Queensland Scout Centre commencing at 6:30pm for approximately 3 hours. Option 2 and 3 will have self-paced learning tasks that need to be completed between each session.

Course #	Venue	Start Date	End Date	Closing date
1002316	Baden Powell Park Campsite - Samford	27-Oct-23 (Fri)	29-Oct-23 (Sun)	29-Sep-23 (Fri)
1002317OL	Online - Course	1-Nov-23 (Wed)	22-Nov-23 (Wed)	6-Oct-23 (Fri)

Scouting Adventure Course

Scouting Adventure is compulsory for Youth Program Leaders (Section and Activity Leaders) and optional for Program Support Leaders (Group Leaders, DCs and RCs). This course will give you the skills to support youth members to put the “out” in Scouting! You will learn about the Outdoor Adventure Skills, develop your knowledge and understanding of each of the core Skills – bushwalking, bushcraft and camping through hands on practical activities in patrols. On this course participants will be required to sleep in a tent, undertake a hike (up to 3 hours duration), and cook a meal outdoors. This is a self catered course - this will be lightweight cooking and hike style foods. Participants will make their own Gilwell Woggle.

Pre-requisites for this course include: completion of the Scouting Essentials course, the On Demand modules for Scouting Adventure and completion of On the Job Phase – Youth Program Leader via the On Demand Learning platform. Apply for this course using the current version of the A15 form. At the completion of this course participants will be issued with their Certificate of Proficiency (CoP). There is an RPL toolkit available for Leaders and Rover Scouts who have been active participants in the Youth Program. To gain credit for this course, interested trainees will need to request a copy of the toolkit from Training Administration and complete the table and provide evidence for each I-Statement. Completed RPL toolkits will be verified by a Subject Matter Expert. Once approved applicants will be invoiced the RPL fee and will be issued with their Certificate of Proficiency (CoP) and materials to make a Gilwell woggle.

Course #	Venue	Start Date	End Date	Closing date
1102315	Baden Powell Park Campsite - Samford	27-Oct-23 (Fri)	29-Oct-23 (Sun)	29-Sep-23 (Fri)
1102316	Baden Powell Park Campsite - Samford	17-Nov-23 (Fri)	19-Nov-23 (Sun)	20-Oct-23 (Fri)

Scouting Management Course

Scouting Management is compulsory for Program Support Leaders (Group Leaders, DCs and RCs). This course will give you skills to bring out the best in other adult leaders. You will learn about adult empowerment, managerial communication and conflict resolution. Pre-requisites for this course include: completion of the Scouting Essentials course, the On Demand modules for Scouting Management and completion of On the Job Phase – Program Support Leader via the On Demand Learning platform. Apply for this course using the current version of the A15 form. At the completion of this course participants will be issued with their Certificate of Proficiency (CoP).

Course #	Venue	Start Date	End Date	Closing date
1202305	Baden Powell Park Campsite - Samford	27-Oct-23 (Fri)	29-Oct-23 (Sun)	29-Sep-23 (Fri)

Scouting Leadership Course

Scouting Leadership is compulsory for all leaders. This course moves away from the practical Scouting skills to further develop you into a great leader. At this course, you will set goals for your Woodbadge project in consultation with the Course Leader and and deepen your knowledge of the Youth Program and Scouting fundamentals

Pre-requisites for this course include: the On Demand modules for Scouting Leadership and a minimum of a 6-month waiting period since being awarded with your Certificate of Proficiency (CoP). Apply for this course using the current version of the A15 form. At the completion of this course participants will complete their agreed Woodbadge Project and On the Job Phase – Scouting Leadership (OTJ-SL) via the On Demand Learning Platform. Once OTJ-SL is completed the participants Woodbadge Parchment, Gilwell Scarf and Beads will be issued to their Next level up Team Leader for presentation at an appropriate occasion.

Course #	Venue	Start Date	End Date	Closing date
1302307	Keewol Park Campsite - Fairbairn Dam (Cwqr)	20-Oct-23 (Fri)	22-Oct-23 (Sun)	22-Sep-23 (Fri)
1302308	Non Scouts Site - Far North Region	3-Nov-23 (Fri)	5-Nov-23 (Sun)	6-Oct-23 (Fri)
1302309	Wyper Park Campsite - Childers Rd (Bundaberg District)	3-Nov-23 (Fri)	5-Nov-23 (Sun)	6-Oct-23 (Fri)
1302311	Baden Powell Park Campsite - Samford	17-Nov-23 (Fri)	19-Nov-23 (Sun)	20-Oct-23 (Fri)
1302310	Tamaroo Campsite - Bluewater (Kennedy Region)	17-Nov-23 (Fri)	19-Nov-23 (Sun)	20-Oct-23 (Fri)

Adventurous Activities Training

AG - Four Wheel Drive

The pre-requisite for this program is Trained Participant (TP-4WD). This program includes: a pre-program Teams call (approximately 2 weeks prior to the On-Program weekend, from 7-8pm). This program is self-catered, and accommodation is BYO tent. Participants must provide their own vehicle with mandatory single recovery point (ideally with front and back rated recovery points (NOT tie down points). Participants should ideally attend, a SP & TP-4WD program in an assistant capacity to build their own capability. There will be an additional cost for participant to pay in addition to the program fee - the Vehicle Permit fee (currently \$34.10)

Apply for this program using the current version of the A15 form. Once course applications are closed you will receive the Pathway documents related to each skill in the Program via email. Pathway documents are made up of three sections - Pre-Program, On-Program and Post-Program. The Pre-Program evidence is required to be submitted prior to attendance at the On-Program component. Post-Program evidence can be submitted up to three months after the Program has concluded. Once all evidence has been received, reviewed and the relevant unit(s) issued. The issuing of the Skill or Guide appointments are subject to holding the relevant core and skills units and as listed in appendix 3 of the National Adventurous Activity Framework (NAAF). All skills and guide appointments are recorded in SMS.

Course #	Venue	Start Date	End Date	Closing date
2900AG2301	Noosa Northshore	4-Nov-23 (Sat)	5-Nov-23 (Sun)	6-Oct-23 (Fri)

AG - Vertical Rescue

The pre-requisites for this program include either Trained Participant (TP) Abseiling (Natural or Artificial) or TP Climbing (Natural or Artificial) or TP Canyoning or TP Caving. This program is non-residential and self-catered.

Apply for this program using the current version of the A15 form. Once course applications are closed you will receive the Pathway documents related to each skill in the Program via email. Pathway documents are made up of three sections - Pre-Program, On-Program and Post-Program. The Pre-Program evidence is required to be submitted prior to attendance at the On-Program component. Post-Program evidence can be submitted up to three months after the Program has concluded. Once all evidence has been received, reviewed and the relevant unit(s) issued. The issuing of the Skill or Guide appointments are subject to holding the relevant core and skills units and as listed in appendix 3 of the National Adventurous Activity Framework (NAAF). All skills and guide appointments are recorded in SMS.

Course #	Venue	Start Date	End Date	Closing date
2100AG2302	Barrabadeen Campsite And Activity Centre - Lake Tinaroo (Far North Region)	18-Nov-23 (Sat)	19-Nov-23 (Sun)	20-Oct-23 (Fri)

Archery Range Program

This weekend program is non-residential and self-catered. This program is an updated package in 2023 and includes: Safe Participant (SP) Archery, Trained Participant (TP) Archery and Guide Archery.

Apply for this program using the current version of the A15 form. Once course applications are closed you will receive the Pathway documents related to each skill in the Program via email. Pathway documents are made up of three sections - Pre-Program, On-Program and Post-Program. The Pre-Program evidence is required to be submitted prior to attendance at the On-Program component. Post-Program evidence can be submitted up to three months after the Program has concluded. Once all evidence has been received, reviewed and the relevant unit(s) issued. The issuing of the Skill or Guide appointments are subject to holding the relevant core and skills units and as listed in appendix 3 of the National Adventurous Activity Framework (NAAF). All skills and guide appointments are recorded in SMS.

Course #	Venue	Start Date	End Date	Closing date
2230PR2303	Wyper Park Campsite - Childers Rd (Bundaberg District)	28-Oct-23 (Sat)	29-Oct-23 (Sun)	29-Sep-23 (Fri)

Cycling Off Road Easy Trails (SP & TP)

This program is non-residential and self-catered.

Apply for this program using the current version of the A15 form. Once course applications are closed you will receive the Pathway documents related to each skill in the Program via email. Pathway documents are made up of three sections - Pre-Program, On-Program and Post-Program. The Pre-Program evidence is required to be submitted prior to attendance at the On-Program component. Post-Program evidence can be submitted up to three months after the Program has concluded. Once all evidence has been received, reviewed and the relevant unit(s) issued. The issuing of the Skill or Guide appointments are subject to holding the relevant core and skills units and as listed in appendix 3 of the National Adventurous Activity Framework (NAAF). All skills and guide appointments are recorded in SMS.

Course #	Venue	Start Date	End Date	Closing date
2301PR2304	Rocky Creek Campsite - Landsborough (Beaver Master District)	11-Nov-23 (Sat)	11-Nov-23 (Sat)	13-Oct-23 (Fri)

Cycling On Road (SP & TP)

This program is non-residential and self-catered.

Apply for this program using the current version of the A15 form. Once course applications are closed you will receive the Pathway documents related to each skill in the Program via email. Pathway documents are made up of three sections - Pre-Program, On-Program and Post-Program. The Pre-Program evidence is required to be submitted prior to attendance at the On-Program component. Post-Program evidence can be submitted up to three months after the Program has concluded. Once all evidence has been received, reviewed and the relevant unit(s) issued. The issuing of the Skill or Guide appointments are subject to holding the relevant core and skills units and as listed in appendix 3 of the National Adventurous Activity Framework (NAAF). All skills and guide appointments are recorded in SMS.

Course #	Venue	Start Date	End Date	Closing date
2300PR2301	Rocky Creek Campsite - Landsborough (Beaver Master District)	12-Nov-23 (Sun)	12-Nov-23 (Sun)	13-Oct-23 (Fri)

Guiding Adventure Program

This program is a catered residential weekend program. This program is a pre-requisite for anyone wishing to be considered for appointment as a Guide. The pre-requisites for this program include Trained Participant (TP) Core and Assistant Guide (AG) Core and skills units in chosen stream/s, This program incorporates both the Guiding Adventure Program and the Train the Trainer – Intro.

Apply for this program using the current version of the A15 form. Once course applications are closed you will receive the Pathway document for the Program via email. Pathway documents are made up of three sections - Pre-Program, On-Program and Post-Program. The Pre-Program evidence is required to be submitted prior to attendance at the On-Program component. Post-Program evidence can be submitted up to three months after the Program has concluded. Once all evidence has been received, reviewed and the relevant unit(s) issued. The issuing of the Skill or Guide appointments are subject to holding the relevant core and skills units and as listed in appendix 3 of the National Adventurous Activity Framework (NAAF). All skills and guide appointments are recorded in SMS.

Course #	Venue	Start Date	End Date	Closing date
46002303	Baden Powell Park Campsite - Samford	17-Nov-23 (Fri)	19-Nov-23 (Sun)	20-Oct-23 (Fri)

Snorkelling Program

This weekend program is non-residential and self-catered. This program is an updated package in 2023 and includes: Safe Participant (SP) Snorkelling, Trained Participant (TP) Snorkelling and Guide Snorkelling.

Apply for this program using the current version of the A15 form. Once course applications are closed you will receive the Pathway documents related to each skill in the Program via email. Pathway documents are made up of three sections - Pre-Program, On-Program and Post-Program. The Pre-Program evidence is required to be submitted prior to attendance at the On-Program component. Post-Program evidence can be submitted up to three months after the Program has concluded. Once all evidence has been received, reviewed and the relevant unit(s) issued. The issuing of the Skill or Guide appointments are subject to holding the relevant core and skills units and as listed in appendix 3 of the National Adventurous Activity Framework (NAAF). All skills and guide appointments are recorded in SMS.

Course #	Venue	Start Date	End Date	Closing date
2500PR2301	La Balsa Park, Sunshine Coast	21-Oct-23 (Sat)	22-Oct-23 (Sun)	22-Sep-23 (Fri)

SP - Basic Water Rescue

This program is delivered in two separate sessions.

Session 1 is a self-paced online theory session for basic water rescue. The link for this component will be emailed to participants with the program letter.

Session 2 is a practical session which requires participants to get wet demonstrating the water rescue techniques learnt in the theory component. The dates listed in the calendar are for session 2. Certificate of completion for session 1 is a pre-requisite for attending session 2.

Apply for this program using the current version of the A15 form. Once course applications are closed you will receive the Pathway document for the Program via email. Pathway documents are made up of three sections - Pre-Program, On-Program and Post-Program. The Pre-Program evidence is required to be submitted prior to attendance at the On-Program component. Post-Program evidence can be submitted up to three months after the Program has concluded. Once all evidence has been received, reviewed and the relevant unit(s) issued. The issuing of the Skill or Guide appointments are subject to holding the relevant core and skills units and as listed in appendix 3 of the National Adventurous Activity Framework (NAAF). All skills and guide appointments are recorded in SMS

Course #	Venue	Start Date	End Date	Closing date
2000SP2307	Baden Powell Park Campsite - Samford	28-Oct-23 (Sat)	28-Oct-23 (Sat)	29-Sep-23 (Fri)
2000SP2308	Baden Powell Park Campsite - Samford	28-Oct-23 (Sat)	28-Oct-23 (Sat)	29-Sep-23 (Fri)
2000SP2311	Barrabadeen Campsite And Activity Centre - Lake Tinaroo (Far North Region)	25-Nov-23 (Sat)	25-Nov-23 (Sat)	27-Oct-23 (Fri)

Course Full

SP - Paddling Fundamentals Flat Water

This program is a day program self catered

Apply for this program using the current version of the A15 form. Once course applications are closed you will receive the Pathway documents related to each skill in the Program via email. Pathway documents are made up of three sections - Pre-Program, On-Program and Post-Program. The Pre-Program evidence is required to be submitted prior to attendance at the On-Program component. Post-Program evidence can be submitted up to three months after the Program has concluded. Once all evidence has been received, reviewed and the relevant unit(s) issued. The issuing of the Skill or Guide appointments are subject to holding the relevant core and skills units and as listed in appendix 3 of the National Adventurous Activity Framework (NAAF). All skills and guide appointments are recorded in SMS.

Course #	Venue	Start Date	End Date	Closing date
2401SP2303	Palm Beach	5-Nov-23 (Sun)	5-Nov-23 (Sun)	6-Oct-23 (Fri)
2401SP2305	Brownsea Water Activity Centre	3-Dec-23 (Sun)	3-Dec-23 (Sun)	3-Nov-23 (Fri)

TP - Bushwalking - Difficult Tracked

The pre-requisite for this program is Safe Participant (SP) Bushwalking. This program includes: a pre-program Teams call (approximately 2 weeks prior to the On-Program weekend, from 7:30-8:30pm). This weekend program is self-catered, and accommodation is BYO tent. Participants must provide their own light weight camping equipment including an individual tent which will be self-carried in a back pack.

Apply for this program using the current version of the A15 form. Once course applications are closed you will receive the Pathway document related to the Program via email. Pathway documents are made up of three sections - Pre-Program, On-Program and Post-Program. The Pre-Program evidence is required to be submitted prior to attendance at the On-Program component. Post-Program evidence can be submitted up to three months after the Program has concluded. Once all evidence has been received, reviewed and the relevant unit(s) issued. The issuing of the Skill or Guide appointments are subject to holding the relevant core and skills units and as listed in appendix 3 of the National Adventurous Activity Framework (NAAF). All skills and guide appointments are recorded in SMS

Course #	Venue	Start Date	End Date	Closing date
2201TP2303	South D'Aguilar National Park	21-Oct-23 (Sat)	22-Oct-23 (Sun)	22-Sep-23 (Fri)

TP - Canoe Flat Water

The pre-requisite for this program is Safe Participant (SP) Paddling Flat Water. This weekend program is self-catered and accommodation is BYO tent.

Apply for this program using the current version of the A15 form. Once course applications are closed you will receive the Pathway document related to the Program via email. Pathway documents are made up of three sections - Pre-Program, On-Program and Post-Program. The Pre-Program evidence is required to be submitted prior to attendance at the On-Program component. Post-Program evidence can be submitted up to three months after the Program has concluded. Once all evidence has been received, reviewed and the relevant unit(s) issued. The issuing of the Skill or Guide appointments are subject to holding the relevant core and skills units and as listed in appendix 3 of the National Adventurous Activity Framework (NAAF). All skills and guide appointments are recorded in SMS.

Course #	Venue	Start Date	End Date	Closing date
2401TP2306	Palm Beach	21-Oct-23 (Sat)	22-Oct-23 (Sun)	22-Sep-23 (Fri)

TP - Kayak Flat Water

The pre-requisite for this program is Safe Participant (SP) - Paddling Flat Water. This is a weekend self-catered program and accommodation is BYO tent.

Apply for this program using the current version of the A15 form. Once course applications are closed you will receive the Pathway documents related to the Program via email. Pathway documents are made up of three sections - Pre-Program, On-Program and Post-Program. The Pre-Program evidence is required to be submitted prior to attendance at the On-Program component. Post-Program evidence can be submitted up to three months after the Program has concluded. Once all evidence has been received, reviewed and the relevant unit(s) issued. The issuing of the Skill or Guide appointments are subject to holding the relevant core and skills units and as listed in appendix 3 of the National Adventurous Activity Framework (NAAF). All skills and guide appointments are recorded in SMS.

Course #	Venue	Start Date	End Date	Closing date
2402TP2302	Palm Beach	11-Nov-23 (Sat)	12-Nov-23 (Sun)	13-Oct-23 (Fri)

TP - Pioneering

The pre-requisite for this program is Safe Participant (SP) -Pioneering. This program is self-catered and accommodation is BYO tent. The program will commence at 7pm Saturday evening through to Sunday afternoon. You can consider attending this program the same weekend as you attend the SP Pioneering Program. This program will cover elements of OAS Stages 6-7 and equip participants with knowledge and skills to mentor youth members working on stage 6 & 7 in the core OAS (pioneering stream).

Apply for this program using the current version of the A15 form. Once course applications are closed you will receive the Pathway documents related to the Program via email. Pathway documents are made up of three sections - Pre-Program, On-Program and Post-Program. The Pre-Program evidence is required to be submitted prior to attendance at the On-Program component. Post-Program evidence can be submitted up to three months after the Program has concluded. Once all evidence has been received, reviewed and the relevant unit(s) issued. The issuing of the Skill or Guide appointments are subject to holding the relevant core and skills units and as listed in appendix 3 of the National Adventurous Activity Framework (NAAF). All skills and guide appointments are recorded in SMS

Course #	Venue	Start Date	End Date	Closing date
2220TP2305	Baden Powell Park Campsite - Samford	26-Nov-23 (Sun)	26-Nov-23 (Sun)	27-Oct-23 (Fri)

Other Training

Child Safe Scouting Officer

This course is for people considering taking on an appointment as a Child Safe Scouting Officer (CSSO). Pre-requisites for this course include holding a Wood badge and gaining approval from your District Commissioner or Regional Commissioner is required. Please be aware that there are limited number of places and these will be allocated on first in basis. Attendance at this course does not automatically guarantee appointment as a CSSO, applicants must sign and agree to a duty statement and seek endorsement from their team leader before appointment is finalised.

Apply for this course using the current version of the A15 form. Courses will run for approximately 2 hours, commencing at 6:30pm. All courses are held at the Queensland Scout Centre at 32 Dixon Street Auchenflower. Regional members can attend these courses via Teams using their Scout Email account.

Course #	Venue	Start Date	End Date	Closing date
44002304	Queensland Scout Centre - Dixon St	25-Oct-23 (Wed)	25-Oct-23 (Wed)	29-Sep-23 (Fri)